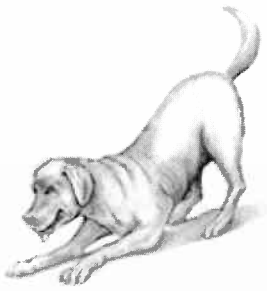


# DOG BODY SIGNALS - "DOGGY LANGUAGE"



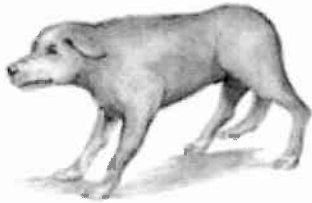
## Playful or Play Bow Posture

The play bow invites others to play. Dogs may also use a play bow to communicate that any prior rough behavior was not intended to be threatening. Dogs may also assume this posture if they have done something wrong, to let you know they meant no harm and really just wanted to play.



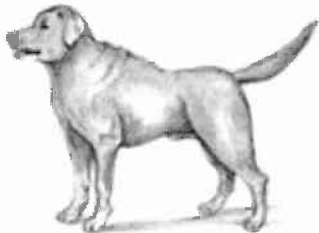
## Active Submission Posture

A dog displaying active submission behavior is offering signs of submission to a superior dog or person to avoid any additional threats or confrontations. This dog is a bit fearful and hopes the superior individual will either retreat or show signs of friendliness.



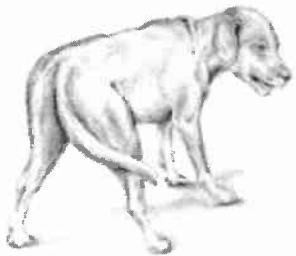
## Defensive Threat Posture

Be very concerned about dogs in defensive threat posture. These dogs are showing signs of fear or submission and aggression. Dogs displaying this behavior are afraid and may attack if pushed. This is the posture assumed by fear biters, dogs who bite out of fear. People often read them wrong, thinking they are harmless because of their facial expression show signs of submission. They do not look beyond the facial expression to the rest of the dog's posture



## Aggressive-Dominant or Offensive Threat Posture

This is a very threatening posture communicating confidence and dominance if confronted. Dogs in this posture are preparing to attack and, if pressed, will bite and will fight. to see what he is really communication. Defensive threat is the most dangerous body posture of dogs.



## Signs of stresses in dogs are as following:

Shaking or shivering scratching excessive dandruff (exfoliate) excessive shedding, dilated pupils, excessive blinking, loss of appetite, diarrhea, restlessness, use of calming signals , sweating through pads of feet, frequent or inappropriate urination, panting, salivating biting or licking self hiding or trying to leave



## Passive Submissive

A completely submissive dog is very afraid of a confrontation. He is signaling to the dominant individual absolute surrender assuring that he is of no threat. Some dogs may show complete submission, expose their inguinal (groin) region, as a friendly gesture differing to their owners or their animal friends.